

Climatic chamber CLIMAX 100, 120, 150, 200 TOUCH



Climax 100 Touch



Climax 120 Touch



Climax 150 Touch



Climax 200 Touch

Characteristics

Display	7" Touch screen display
Structure and Insulation	Sanitized pre-coated steel with bacteriostatic activity, white color- in/out (rust- corrosion-proof material); insulation polyurethane thickness 40 mm
Door	Two glass doors with triple glass panels
Light	Led type with adjustable brightness
Controller	ECT-F TOUCH
Castors/feet	100/120/150 have small castors and stabilizing feet and 200 has adjustable feet
Alarms	Acoustic and Visual for temperature deviations and failures, with automatic recording
Data and Event recording	10 years on SD card; last year on Flash-memory
Temperature Graph	A customizable real time graphic always visible from the home page
Connectivity	USB-SD-SIM port with frontal access ; Dry Contact; Serial ports RS485 and RJ45
Temperature range	20°C - 24°C
Battery	Rechargeable NiMh back-up batteries
Refrigeration Type	Forced-air, ventilated
Defrost	Automatic with automatic evaporation of the condensate water

TOUCH SCREEN HOME PAGE

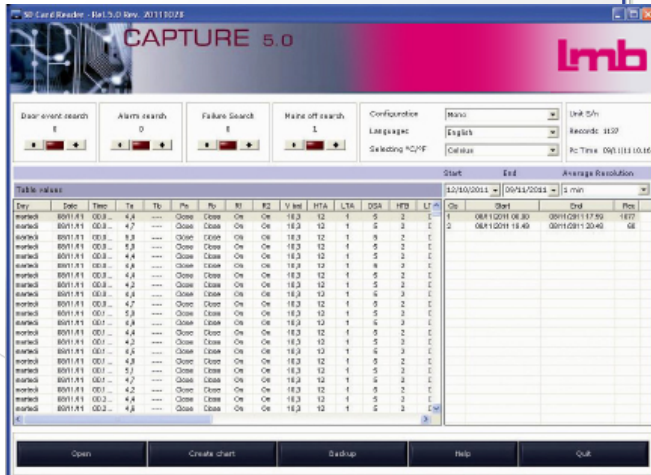
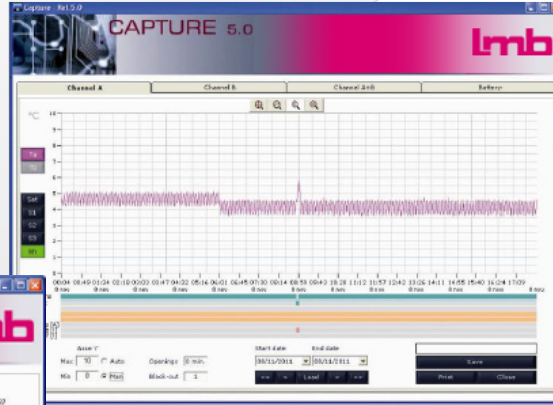
- Internal chamber temperature
- Status of the equipment (cooling, pause..)
- Pre-set Set point
- High temperature –Low temperature pre-set limits
- Instant power consumptions values
- Mains power level
- Real time graph of the refrigerator temperatures, customizable, to display up to three probes at the same time (probes: Ect-f controller, evaporator, condenser, and, if present, humidity probe; additional probe or product temperature simulation probe if Dmlp Touch is fitted)



Climatic chamber CLIMAX 100, 120, 150, 200 TOUCH

Software

- Software upgrade thanks to the USB frontal slot
- Capture 5.0 software: available into the SD Card for a quick reading of the recorded data and creation of customizable daily or weekly graphs



Materials

- Enhanced insulation thickness. Environment friendly polyurethane foam, water based foaming
- External structure in pre-coated antibacterial sheet steel
- Internal structure stainless steel (100, 120); sanitized pre-coated steel with bacteriostatic activity, white color (150, 200 – opt.stainless steel)
- LED light (white color; blue light when Night and Day function is activated)
- Solid doors fitted with an integrated ergonomic anodized aluminum for a perfect grip
- Improved components featuring better performance and reduced power consumption
- Easier access to the condenser room (the cleaning of the condenser is now simpler for the end-user)
- Easier access to the technical compartment for service



Technical data	CLIMAX 100 TOUCH	CLIMAX 120 TOUCH	CLIMAX 150 TOUCH	CLIMAX 200 TOUCH
External dimensions LxDxH (cm)	60,5 x 61 x 86,5	121 x 71 x 87,5	72 x 76 x 214	144 x 82,5 x 207
Internal dimensions LxDxH (cm)	52,5 x 39,5 x 48	106,1 x 55,9 x 46,5	60 x 58,2 x 150	130 x 69 x 151
Capacity (Agitator)	1 x 24/48/60	2 x 24/48/60/60A or 1 x 96/96A	3 x 24/48/60/60A	6 x 24/48/60/60A or 3 x 96/96A
Temperature	22°C +/-2°C	22°C +/-2°C	22°C +/-2°C	22°C +/-2°C
Absorption	0,1kW	0,1kW	0,2kW	0,2kW
Refrigerant	R290	R290	R290	R290
Supply	230V/1~/50Hz	230V/1~/50Hz	230V/1~/50Hz	230V/1~/50Hz
Finished&packed unit on pallet	72 x 65 x 105 105	127 x 80 x 107 137	76 x 81 x 220 146	148 x 86 x 214 276
Weight without internal fitting(kg)	66	114	128	261